

bPro-H22



METTLER TOLEDO

- 1. Good design**
- 2. Narrow housing**
- 3. Easy to clean**
- 4. Robust smooth housing**
- 5. Easy printer loading-> USP !!**
- 6. Installation friendly-> USP !!**
- 7. WLAN integration-> USP !!**
- 8. Standard printer types**
- 9. Water protected**
- 10. Easy calibration-> USP !!**

Portfolio



bPro-U2



bPro-U3



bPro-T2



bPro-H2



bPro-H22



bPro-R2



bPro-C2

- the bPro-H22 is a new member in the bPro-scale-line and bases on the standard HW and SW of the bPro-scale.
- It is fully compatible to the bPro-scales in a network
- After a transition period the bPro-H22 will replace the bPro-H2.

Market-Segments

Application

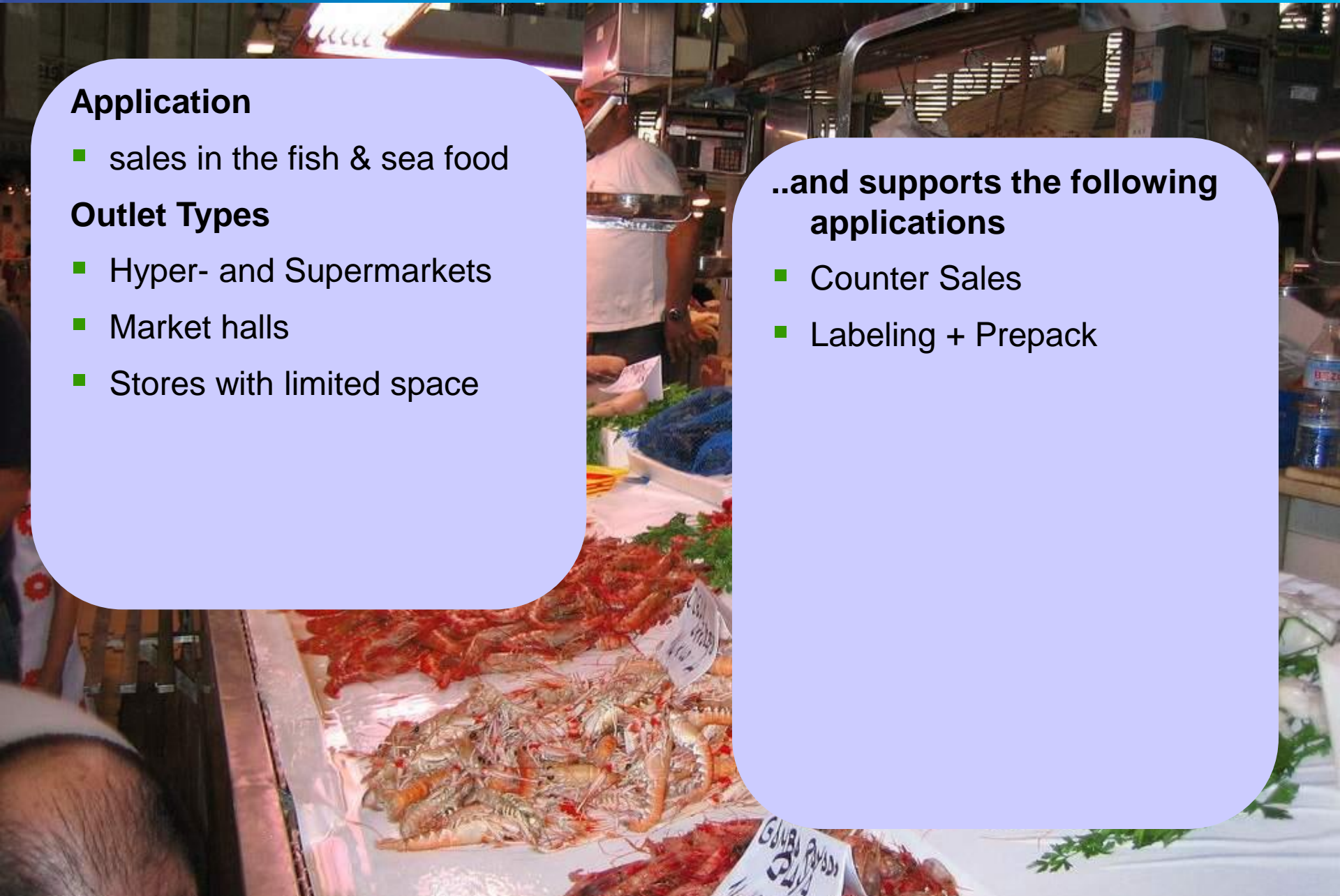
- sales in the fish & sea food

Outlet Types

- Hyper- and Supermarkets
- Market halls
- Stores with limited space

..and supports the following applications

- Counter Sales
- Labeling + Prepack



Advantages at a glance

Good design

- New design fits now to the bPro-line
- **Best design for hanging scales on the market**

Slim dimensions

- Enables better contact to the customer
- Space saving

Smooth surface

- Easy to clean and to maintain

Keyboard

- Simple to clean, washable
- Light touch
- Protected, wear-free
- Describable

Platter

- Easy to clean

Dripping water protection

- Makes the bPro-H22 well adapted for the fish counter

Clear, brilliant anti-glare display

- Easy to read
- Ambient light reflections minimized

ABS-housing

- Robust
- Made for a rough and wet environment
- Rust is excluded by design
- Light weight

Paper exit

- Paper is easy obtainable
- No longer wet arms



bPro-H22 ▶ Printer

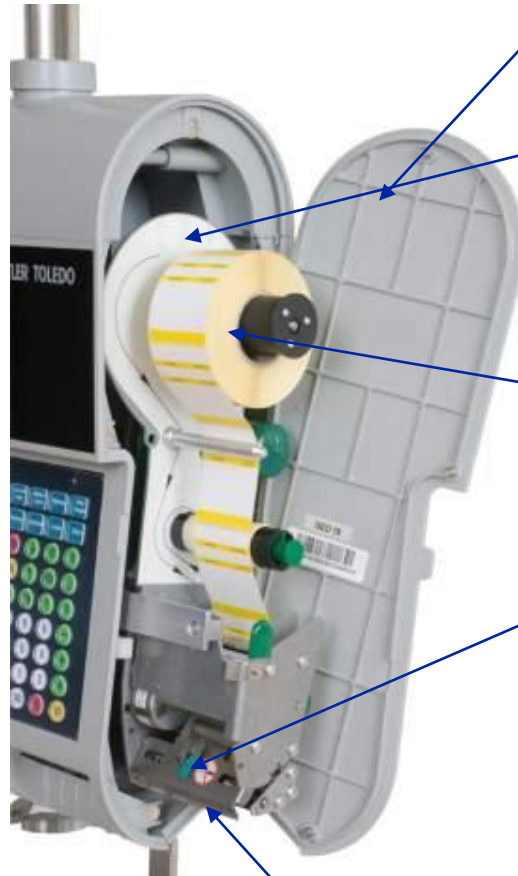
Easy paper loading

- Vendor can easily handle the printer
- Visibility of paper loading
- Printer rolls out

This is a unique selling point, no scale supplier has such a comfortable paper load on market.

Label printer as Standard

- Label print
- Receipt print



Robust printer door

- Easy to open and close
- Magnets used
- Free access to the printer

Paper change

- Printer slides out for comfortable paper change
- Free access to the printer

Large label roll diameter

- Less paper change
- Less loss of time

Print head

- Quick cleaning due to free access to print head

Paper exit at the bottom

- No longer wet arms
- Paper is easy obtainable

bPro-H22 ► Publicity

Use the customer side for publicity

- For special offers
- For address and logo
- For customer hints like opening times, recipes



Low cost

- Use your office software to create and show your actual, daily promotions

Show publicity here

- Use this exposed area for publicity
- Vivid pictures, Zero-power consumption, GREEN, superior lifetime

Simple to fix and to exchange

- Paper is fixed by Magnets.
- No ugly sticky tape

bPro-H22 ► Interfaces

Communication professional

- Ethernet communication
- USB connector
- RS232 for scanners
- **USP: Wireless 802.11 b/g integrated as an option**

Sheltered wireless

- No external antennas
- Avoids damaging and pollution
- WLAN is invisible



Simple access to interfaces

- No tools for screws or nuts

Best communication possible

- Due to the position of the antennas the radiation is ensured

Clean cabling

- All cables are guided in the tube
- No harness visible



Protected interfaces

- No polluted connectors
- Water protected

Wireless installation

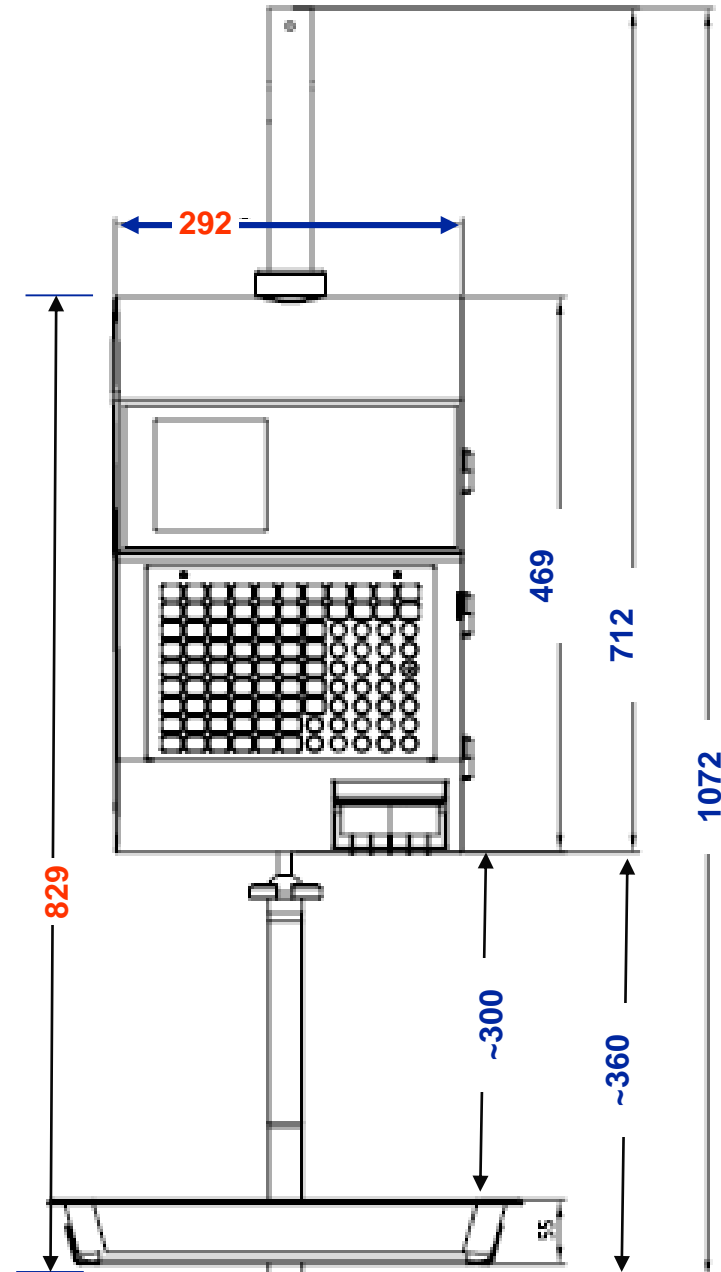
- Due to the cassette feature, it is simple to add wireless after installation

bPro-H22 ► Dimension

Slim design

- Saves valuable counter space
- Better communication to customers
- **USP: Slimmest midrange scale on the market**

Company	Model	Width [mm]	Height [mm]
MT	bPro-H22	292	829
MT	bPro-H2	383	665
Digi	SM500H	383	709
Bizerba	BS400	362	742
Dibal	L-750	395	700
Avery	IM 500	372	743



bPro-H22 ► Networking

We use the Retail-Standards

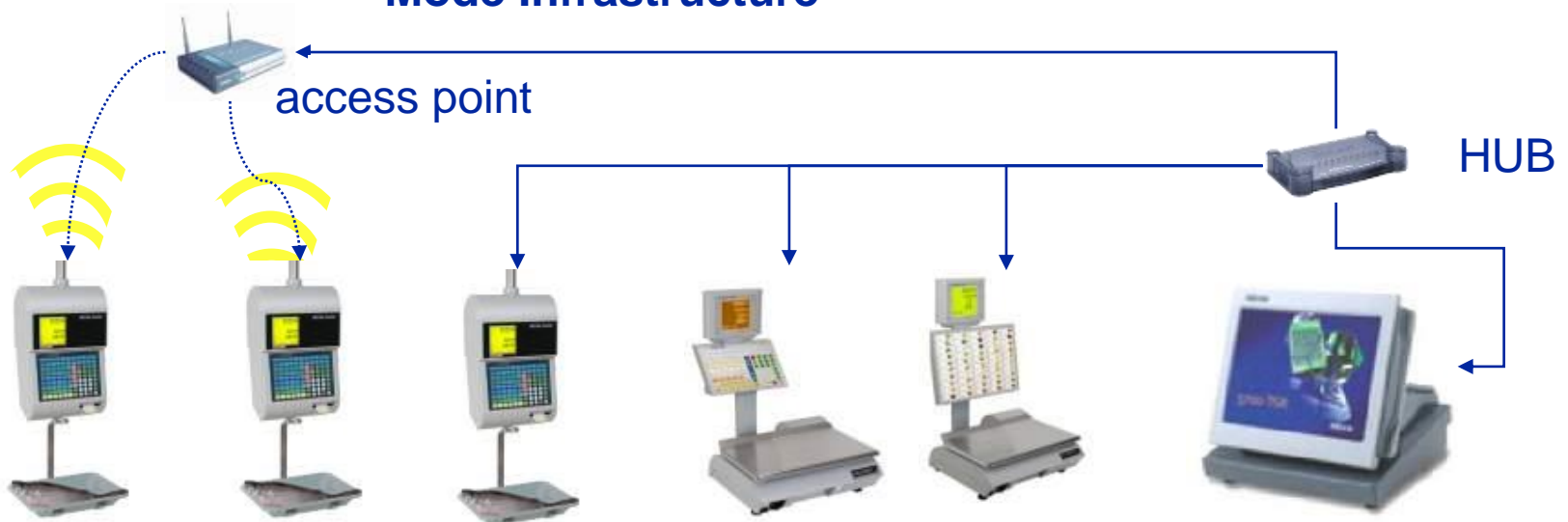
- Cabling 10BaseT
- Ethernet 802.11 and TCPIP, UDP
- Wireless 802.11b/g Option

- All bPro scales are compatible in a network
- bPro-H22 uses the wireless standard for IT-devices

Mode Adhoc



Mode Infrastructure



bPro-H22 ▶ Simple Calibration

Calibration made easy

- Easy to check seal
- Easy to push the button
- Housing to open without damaging of sealing



Summary ► Main benefits

1. Good design
2. Narrow housing
3. Easy to clean
4. Smooth and Robust
5. Easy printer loading -> USP !!
6. Installation friendly -> USP !!
7. WLAN integration -> USP !!
8. Standard printer types
9. Water protection
10. Easy calibration -> USP !!

